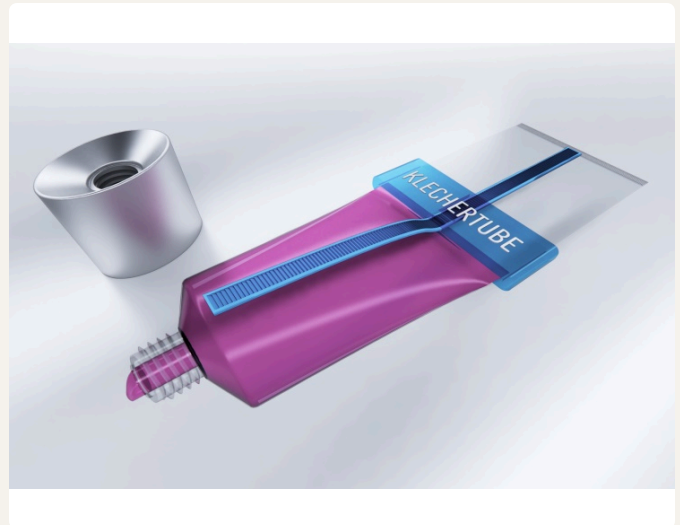


FOR BRAND OWNERS & TUBE MANUFACTURERS

The squeezable tube, finally *finished*.

A patented, drop-in upgrade for extruded, laminated, and molded tubes in single, dual, and multi-chamber formats. Evacuates nearly all of the product, blocks air re-entry, and turns rigid recyclable polymers into tubes consumers actually enjoy using.



i.
Sealed against air.

The pusher seals the chamber as it advances, dramatically reducing air contact and oxidation. Formulations stay potent from first dose through last.

ii.
Effortless squeeze.

A one-way ratcheting track lets users dispense by sliding, squeezing, or both. Critical for arthritic, elderly, and visually impaired users.

iii.
Precision dosing.

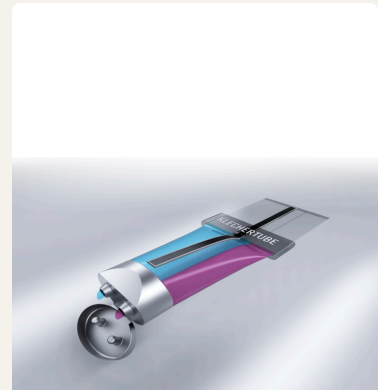
Calibrated dispensing from a single tube, and accurate proportioning from dual-chamber formats. No syringes, pistons, or active mechanisms required.

WHERE KLECHERTUBE WINS

The only system that solves *dual-chamber co-dispensing* and *high-viscosity flow* in a recyclable tube.

Tube pumps clog on viscous formulations. Airless bottles fail at dual-chamber proportioning. Standard tubes leave product behind and re-inflate with air. KlecherTube replaces all three at near-parity tooling cost.

- **Dual-chamber proportioning.** Predictable co-dispensing across mismatched viscosities and densities, with no syringe or piston.
- **High-viscosity capable.** Dispenses thick formulations that defeat conventional pump systems, with consistent flow regardless of fill density.



APPLICATIONS

01

Cosmetics

Serums, creams, color

02

Personal Care

Toothpaste, body

03

Pharmaceutical

Topical, OTC, Rx

04

Food

Sauces, pastes, gels

05

Industrial

Adhesives, sealants

MANUFACTURING

i.

Drop-in compatible

Stock tubes & closures, no retooling required

ii.

Mold-native option

Track formed during fabrication, IML compatible

iii.

Recyclable mono-material

HDPE / PP track and pusher, injection-moldable

INTELLECTUAL PROPERTY

Protected by 11 U.S. PATENTS · Additional U.S. & international patents pending. Licensing & co-development inquiries welcome.

CONTACT

Klecher, LLC
460 Neptune Avenue
Brooklyn, NY 11224

REACH US

+1 917 697 0284
klecher.com