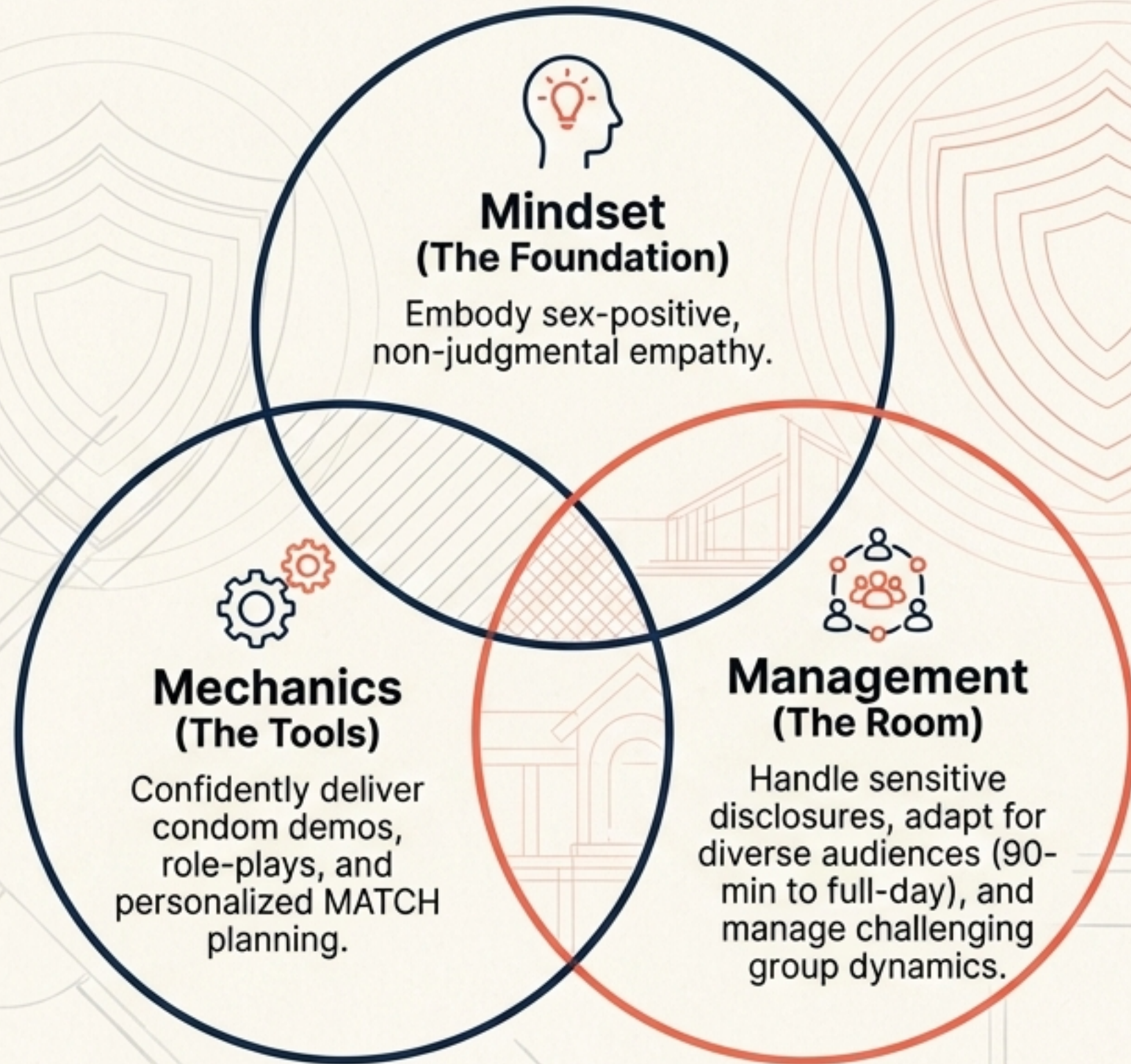


The Facilitator's Blueprint

MATCH Your Protection:
Fearless, Aware, & Protected

Core Competencies of a FAP Facilitator



Target Audience

Designed for Health Educators, Peer Navigators, Community Health Workers, and Advocates leading in their communities (8-15 trainees).

saFER Sex as Layered Freedom

SESSION 1: WELCOME & PROGRAM OVERVIEW (30 min)

AWARE

Understanding status, combinations, and the continuum of risk.

PROTECTED

Utilizing condoms, PrEP, U=U, and the MATCH framework.

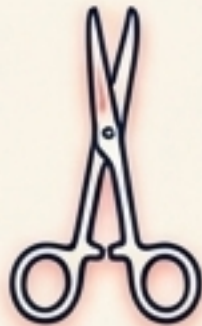
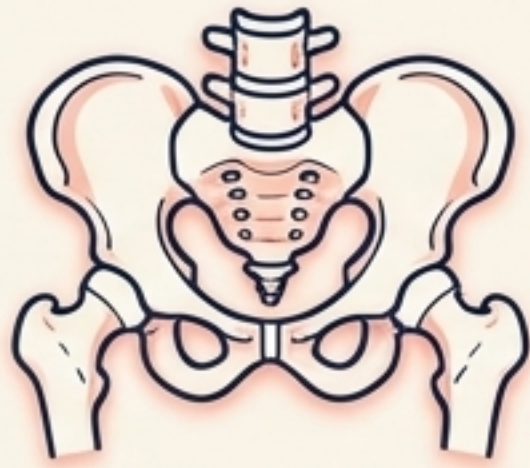
FEARLESS

The resulting freedom—sex-positive, empowered, and free from stigma.

Program Impact: By combining awareness and protection, we empower communities to reverse declining STI rates and bridge access gaps.

The Facilitator's Toolkit

Physical Assets



Curriculum Assets



Printed Handouts Pack



Detailed Facilitator's Guide



Scenario Cards



Feedback Checklists



The Educators Hub: The central digital repository for the Curriculum, Workbook, Slides, and ongoing updates.

Establishing the FAP Mindset

Grounded in Cultural Humility, Confidentiality, and Active Listening.

Action to Avoid (Endorsing/Moralizing)

FAP Action (Empathizing/Harm-Reduction)

Trigger: Participant reveals a trauma disclosure.

Trying to “fix” the trauma or offering unsolicited medical/psychological diagnoses.

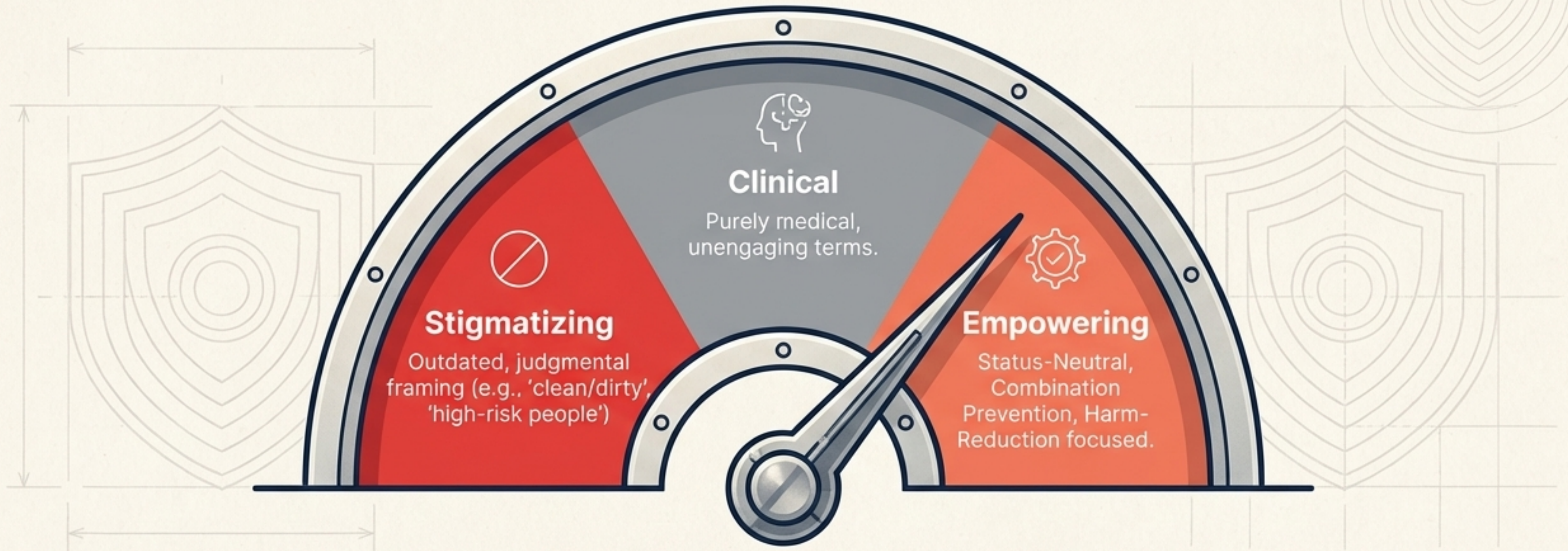
Holding space, active listening, and providing warm hand-offs to local support resources.

Trigger: A participant expresses HIV stigma or defensive questioning.

Shaming the participant or engaging in an adversarial debate.

Utilizing non-judgmental framing to gently correct myths and redirect the group to the core science.

The Status-Neutral Language Dial



Status-neutral language is the key to dissolving defensiveness. It focuses on behaviors and layered protection rather than moralizing identities.

Content Walkthrough: Defending the Science



Fact

PrEP & U=U

Equipping facilitators to explain the latest CDC research updates and combination prevention strategies confidently.



Fact

Barriers

Addressing common misconceptions about external and internal condom efficacy and lube compatibility.



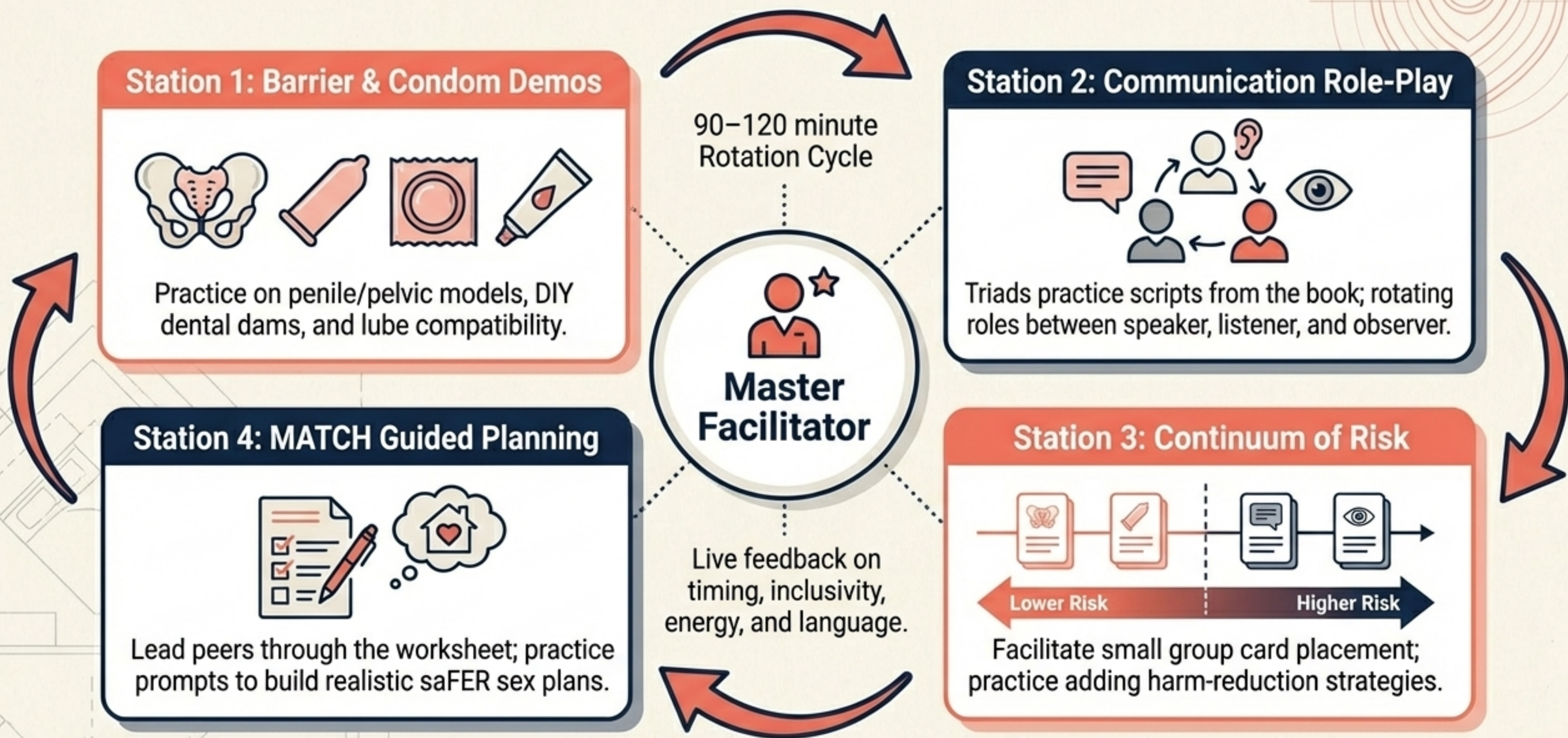
Fact

The MATCH Framework

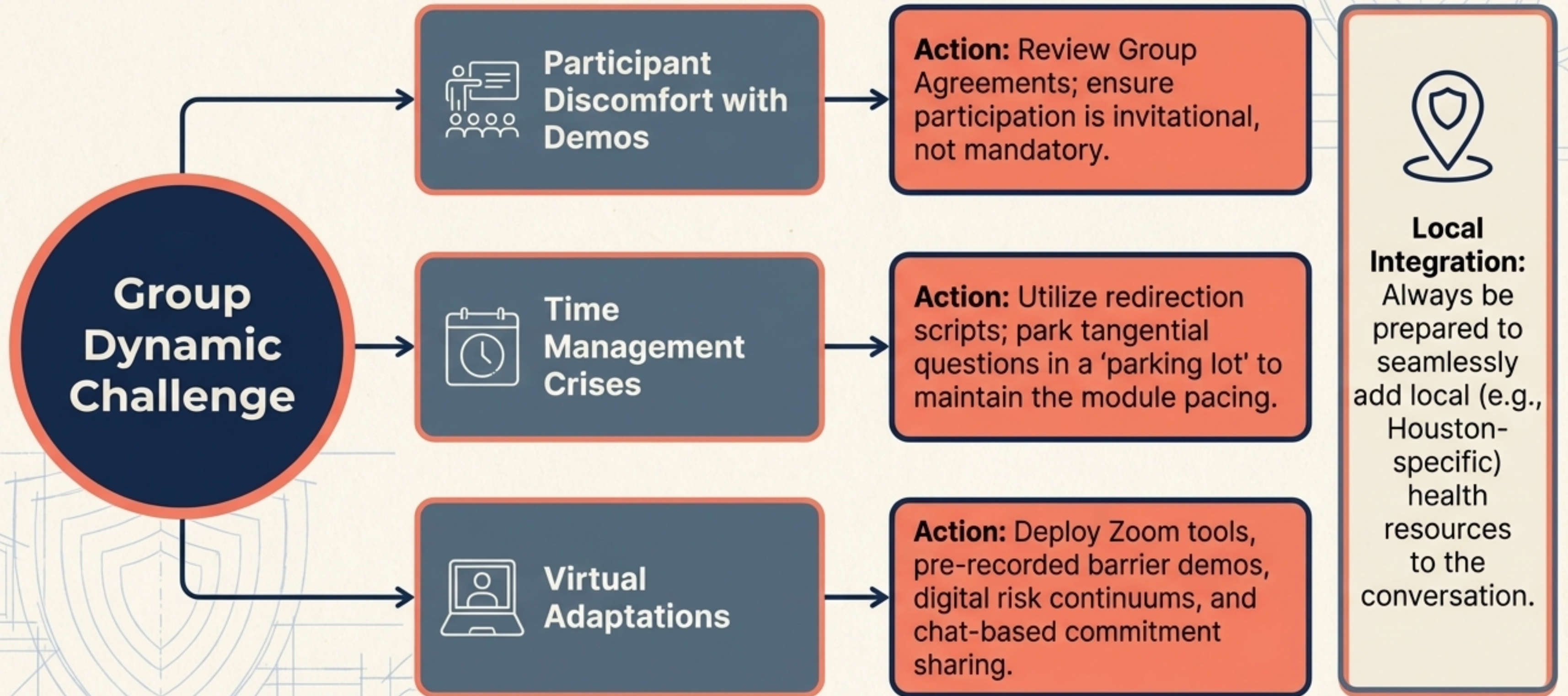
Helping participants build personalized saFER sex plans based on their unique realities.

Facilitators must encourage group discussion while anchoring answers in the provided 5-module ebook chapters.

The Hands-On Practice Schematic



Navigating Complex Group Dynamics



Adapting Delivery Models & Audiences

90-Minute Focus

Rapid MATCH planning & core myths.

Half-Day Deep Dive

Barrier demos + communication role-plays.

Full-Day Immersive

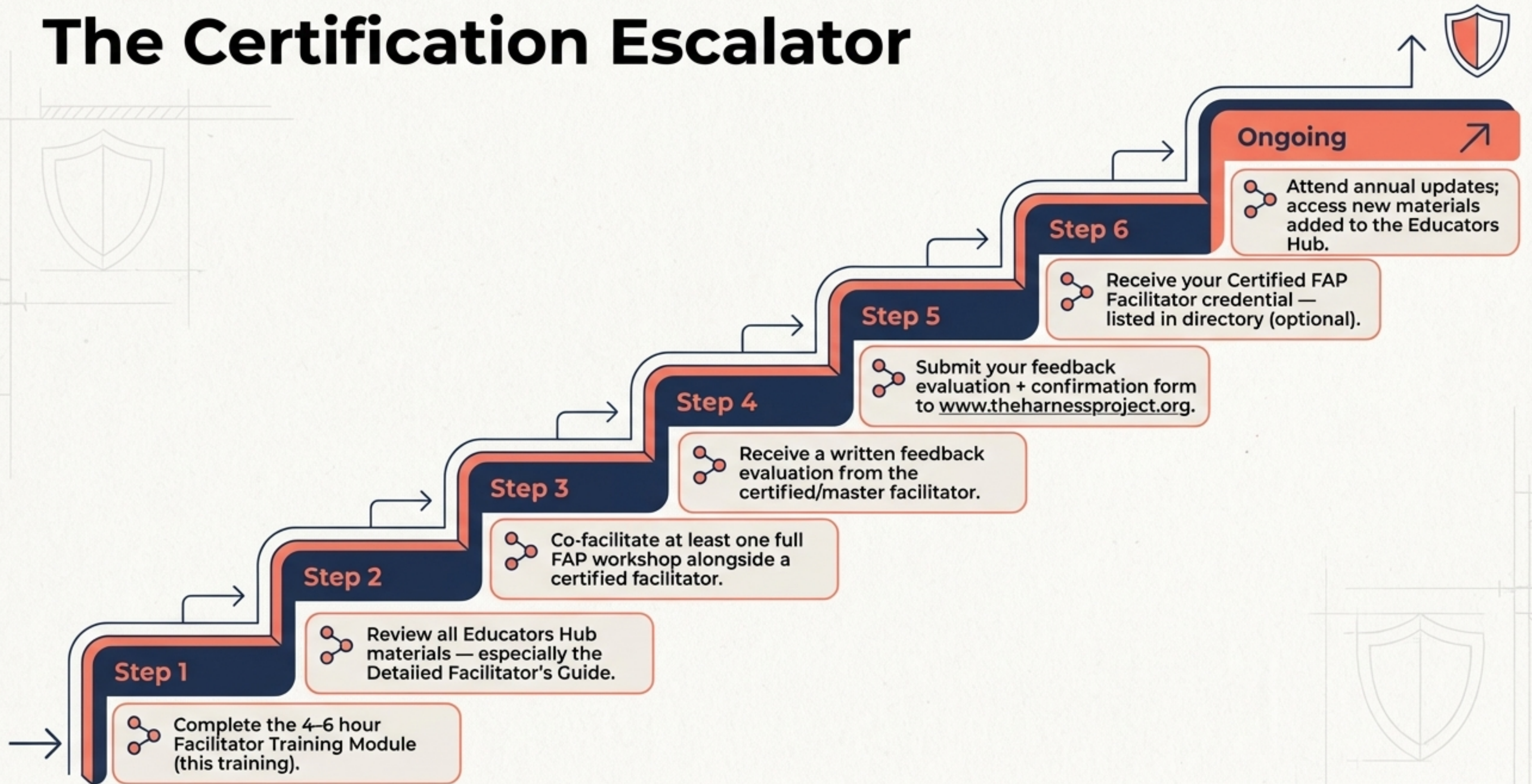
Comprehensive curriculum + extensive hands-on practice.

Customization Targets:

Specific strategies for LGBTQ+ communities, Youth (18-24), people living with HIV, and clinical settings.

The Mini-Pitch Practice: Trainees will pitch a 5-minute segment (e.g., condom demo opener) to the room, receiving one 'glow' and one 'grow' in feedback.

The Certification Escalator



Commitment to Action

Initiative: My First Workshop Plan

Target Date: [.....]

Intended Audience: [.....]

Selected Delivery Model: [.....]

Support Needed: [.....]

I feel ready
to facilitate
because...