

Commercial Refrigeration



Catalog 2024



At Altitude, we take cooling to the next level.

Our goal is to give you top-quality refrigeration that goes beyond your expectations. With modern design and great performance, our products ensure freshness and satisfaction.

Why Altitude?

COMMERCIAL REFRIGERATION SPECIALIST

Altitude are expert in plug-in supermarket refrigeration solutions for tropical climates.

CONFIDENT COMPLIANCE

Confident compliance is our commitment at Altitude, ensuring that all our products and services meet the highest standards of regulatory and industry requirements.

SERVICING THE SOUTH PACIFIC

Our products and services can be made available to you anywhere in the South Pacific region.

EFFECTIVE AFTER SALES SUPPORT

We take pride in offering expert after-sales support, ensuring our services continue to meet your specific needs with precision and professionalism.

ENERGY EFFICIENCY & SUSTAINABILITY

Wherever possible, we prioritize energy efficiency and sustainability, offering innovative solutions that not only reduce energy consumption but also contribute to a greener and more sustainable future for our planet.

SPARE PARTS & SERVICE SUPPORT

We keep a full inventory of spare parts for Altitude refrigeration and other major brands. As authorized agents, we ensure quick access and expert support to keep your equipment running smoothly.



Upright Coolers, Chillers & Freezers



Glass Door Upright

Glass Door Upright units, available in **freezers** and **coolers** in **1-door, 2-door, and 3-door** options, are designed for commercial use with minimal restrictions. These units feature a black body design that adds a touch of elegance and modernity to any setting, making them a perfect fit for both **functionality and style**.

Bright **LED Lamp Box Panel** offering sleek, modern illumination for the cooler, enhancing the overall display.

Built-in **White LED lights** provide bright, energy-efficient illumination for a clear and attractive display.

High-efficiency **compressor** that delivers reliable cooling performance, ensuring consistent and optimal temperatures.



Durable, adjustable **metal shelves** designed for optimal storage, enhancing the cooler's organization and display.

Digital **Temperature Controller** for precise cooling and maintaining optimal conditions with easy-to-read displays.

COOLER

TEMPERATURE RANGE 0°C TO 10°C

DOORS	SHELVES	DIMENSIONS in mm
SINGLE	4	686(D) X 850(W) X 2117(H)
DOUBLE	4	1375(D) X 850(W) X 2117(H)
TRIPLE	4	2062(D) X 850(W) X 2117(H)

FREEZER

TEMPERATURE RANGE -18°C TO -22°C

DOORS	SHELVES	DIMENSIONS in mm
SINGLE	4	686(D) X 850(W) X 2117(H)
DOUBLE	4	1375(D) X 850(W) X 2117(H)
TRIPLE	4	2062(D) X 850(W) X 2117(H)

* Additional Shelves can be purchased.

Solid Door Upright

Solid Door Stainless Steel units are available as **coolers** and **freezers** in **1-door, 2-door, and 3-door options**. They are specifically **designed for commercial kitchen** use. These units feature robust stainless steel doors that offer superior strength and durability. The sleek design also adds a professional and modern touch to the workspace, combining toughness with style.

Top-mounted **compressor** ensures efficient cooling while maximizing interior storage space.

Digital **Temperature Controller** for precise cooling and maintaining optimal conditions with easy-to-read displays.

Sturdy **castors** ensure easy mobility, allowing effortless positioning and relocation of the unit.



COOLER

TEMPERATURE RANGE 0°C TO 10°C

DOORS	SHELVES	DIMENSIONS in mm
SINGLE	4	705(D) X 825(W) X 1980(H)
DOUBLE	4	1400(D) X 825(W) X 1980(H)

FREEZER

TEMPERATURE RANGE -18°C TO -22°C

DOORS	SHELVES	DIMENSIONS in mm
SINGLE	4	705(D) X 825(W) X 1980(H)
DOUBLE	4	1400(D) X 825(W) X 1980(H)

Commercial Ice Machine



Self-contained Ice Machine

Altitude Ice Machines are available in **25KG, 40KG, 70KG, and 80KG** capacities. These units are engineered for optimal performance in **tropical-climates**. These units are designed to ensure consistent and reliable ice production, even in demanding conditions. With a focus on durability and efficiency, they feature a robust ice harvesting system, a reliable compressor, and **advanced water filtration** for clean, high-quality ice. All **backup parts are readily available**, and qualified **service technicians** are on hand to provide support, making them an ideal choice for any busy kitchen environment.



Stay-up Lid that remains in open position for ease in removing ice from bin.

Auto **Self-cleaning function** for easy daily maintenance.

Insulated storage bin, that maintains ice at the perfect temperature and minimizing heat transfer until needed.

User friendly **control board** for overseeing all functions & diagnostics.

Most models come with **water filter** to contaminants and ensure consistency in ice production.

Sturdy Legs for stable support, ensuring durability and reliability in demanding commercial environments.

25KG		40KG		50KG		60KG	
BIN CAPACITY		BIN CAPACITY		BIN CAPACITY		BIN CAPACITY	
16KG		16KG		21KG		21KG	
DIMENSIONS		DIMENSIONS		DIMENSIONS		DIMENSIONS	
DEPTH	485	DEPTH	485	DEPTH	620	DEPTH	620
WIDTH	500	WIDTH	500	WIDTH	500	WIDTH	500
HEIGHT	840	HEIGHT	840	HEIGHT	840	HEIGHT	840
70KG		80KG		110KG		135KG	
BIN CAPACITY		BIN CAPACITY		BIN CAPACITY		BIN CAPACITY	
35KG		35KG		35KG		35KG	
DIMENSIONS		DIMENSIONS		DIMENSIONS		DIMENSIONS	
DEPTH	725	DEPTH	725	DEPTH	725	DEPTH	725
WIDTH	665	WIDTH	665	WIDTH	665	WIDTH	665
HEIGHT	910	HEIGHT	910	HEIGHT	910	HEIGHT	910

Modular Ice Machine

Altitude Modular Ice Machines are available in **various capacities** to suit your needs. Engineered for optimal performance in tropical climates, these units ensure **consistent and reliable ice production**, even under demanding conditions. Designed with durability and efficiency in mind, they feature a robust ice harvesting system, a reliable compressor, and **advanced water filtration** for clean, high-quality ice. With **readily available backup parts** and **qualified service technicians** on hand, they are an ideal choice for any busy kitchen environment.



Auto **Self-cleaning function** for easy daily maintenance.

User friendly **control board** for overseeing all functions & diagnostics.

Most models come with **water filter** to contaminants and ensure consistency in ice production.

Stay-up Lid that remains in open position for ease in removing ice from bin.

Insulated storage bin, that maintains ice at the perfect temperature and minimizing heat transfer until needed.

Sturdy Legs for stable support, ensuring durability and reliability in demanding commercial environments.

150KG		180KG		250KG		270KG		330KG	
BIN CAPACITY		BIN CAPACITY		BIN CAPACITY		BIN CAPACITY		BIN CAPACITY	
140KG		140KG		200KG		200KG		200KG	
DIMENSIONS Ice machine		DIMENSIONS Ice machine		DIMENSIONS Ice machine		DIMENSIONS Ice machine		DIMENSIONS Ice machine	
DEPTH	910	DEPTH	910	DEPTH	930	DEPTH	930	DEPTH	930
WIDTH	585	WIDTH	585	WIDTH	785	WIDTH	785	WIDTH	785
HEIGHT	1700	HEIGHT	1700	HEIGHT	1760	HEIGHT	1845	HEIGHT	1845
DIMENSIONS Storage Bin		DIMENSIONS Storage Bin		DIMENSIONS Storage Bin		DIMENSIONS Storage Bin		DIMENSIONS Storage Bin	
DEPTH	910	DEPTH	910	DEPTH	930	DEPTH	930	DEPTH	930
WIDTH	585	WIDTH	585	WIDTH	785	WIDTH	785	WIDTH	785
HEIGHT	1645	HEIGHT	1645	HEIGHT	1725	HEIGHT	1725	HEIGHT	1880

500KG		600KG	
BIN CAPACITY		BIN CAPACITY	
200KG		200KG	
DIMENSIONS Ice machine		DIMENSIONS Ice machine	
DEPTH	930	DEPTH	930
WIDTH	785	WIDTH	785
HEIGHT	1995	HEIGHT	1995
DIMENSIONS Storage Bin		DIMENSIONS Storage Bin	
DEPTH	930	DEPTH	930
WIDTH	785	WIDTH	785
HEIGHT	1880	HEIGHT	1995

Bar & Restaurant Display Refrigeration



Mini Bar Fridge

Altitude Mini Bar units are available in **compact sizes**. These units are designed for seamless integration into **hotel rooms or small spaces**. These units offer reliable cooling for **beverages and snacks**, with a sleek design that complements any interior. With a full **inventory of spare parts** and efficient **after-sales support**, including access to qualified technicians, these mini bars ensure consistent performance and guest satisfaction.



GLASS DOOR

DOORS

REVERSIBLE - HINGED

TEMPERATURE

5 - 18°C

SHELVES

METAL

VOLUME

65 L

DIMENSIONS in mm

440(D) X 470(W) X 630 (H)



SOLID DOOR

DOORS

REVERSIBLE - HINGED

TEMPERATURE

5 - 18°C

SHELVES

METAL

VOLUME

85 L

DIMENSIONS in mm

430(D) X 470(W) X 810(H)

Under Counter Cooler

Altitude Under Counter Cooler units are **available in various configurations**. These units are designed for high-traffic areas, offering **reliable cooling** and stylish storage for beverages. With a **full inventory of spare parts** and **effective after-sales** support, including qualified technicians, these units ensure minimal downtime and long-term reliability in any busy bar environment.



Metal Wire Shelves that provide strong, durable support while allowing for excellent air circulation, ensuring efficient cooling and organized storage.

Lockable Door providing secure access, ensuring controlled entry and added safety for stored items.

Digital Temperature Controller ensuring precise cooling with easy-to-read displays, maintaining optimal conditions effortlessly.

SINGLE DOOR

DOORS	SHELVES	VOLUME	DIMENSIONS in mm
HINGED	2	138 L	520 (D) X 600 (W) X 900 (H)

DOUBLE DOOR

DOORS	SHELVES	VOLUME	DIMENSIONS in mm
HINGED	2	208 L	520 (D) X 900 (W) X 900 (H)
SLIDING	2	208 L	520 (D) X 900 (W) X 900 (H)

TRIPLE DOOR

DOORS	SHELVES	VOLUME	DIMENSIONS in mm
HINGED	2	320 L	520 (D) X 1350 (W) X 900 (H)
SLIDING	2	320 L	520 (D) X 1350 (W) X 900 (H)

Display Coolers

Altitude Display Cooler units come in **various configurations** and are designed to highlight products while maintaining optimal temperatures. Featuring **heated glass** to prevent condensation, these coolers ensure clear visibility at all times. Ideal for high-traffic areas, they offer **reliable cooling** and an attractive presentation. With a full inventory of **spare parts** and efficient **after-sales support**, including access to qualified technicians, these units guarantee minimal downtime and consistent performance, making them perfect for busy retail environments.



ATCB-90S

TEMPERATURE

+2 - +8°C

DOOR

SLIDING

DIMENSIONS in mm

530(D) X 900 (W) X 750 (H)

ATCB-120S

TEMPERATURE

+2 - +8°C

DOOR

SLIDING

DIMENSIONS in mm

530(D) X 1200 (W) X 750 (H)



ATCD900

TEMPERATURE

+2 - +8°C

DOOR

SLIDING

DIMENSIONS in mm

660 (D) X 900 (W) X 1130(H)

ATCD1200

TEMPERATURE

+2 - +8°C

DOOR

SLIDING

DIMENSIONS in mm

660 (D) X 1200 (W) X 1130(H)

ATCD1500

TEMPERATURE

+2 - +8°C

DOOR

SLIDING

DIMENSIONS in mm

660 (D) X 1500 (W) X 1130(H)

ATCD1800

TEMPERATURE

+2 - +8°C

DOOR

SLIDING

DIMENSIONS in mm

660 (D) X 1800 (W) X 1130(H)



ATCB900

TEMPERATURE

+2 - +8°C

DOOR

SLIDING

DIMENSIONS in mm

660 (D) X 900 (W) X 1200 (H)

ATCB1200

TEMPERATURE

+2 - +8°C

DOOR

SLIDING

DIMENSIONS in mm

660 (D) X 1200 (W) X 1200 (H)

ATCB1500

TEMPERATURE

+2 - +8°C

DOOR

SLIDING

DIMENSIONS in mm

660 (D) X 1500 (W) X 1200 (H)

ATCB1800

TEMPERATURE

+2 - +8°C

DOOR

SLIDING

DIMENSIONS in mm

660 (D) X 1800 (W) X 1200 (H)

Dual Zone Wine Coolers

Altitude Dual Zone Wine Coolers are designed to store different types of wine at their ideal temperatures simultaneously. With **separate temperature zones**, these units offer precise control to preserve the quality and flavor of both red and white wines. Featuring a sleek design and **heated glass** to prevent condensation, they ensure clear visibility and an elegant display. With a full inventory of **spare parts** and efficient **after-sales** support, including access to qualified technicians, these coolers guarantee reliable performance and minimal downtime, making them perfect for both home and commercial settings.



STAINLESS STEEL WINE CHILLER

DOOR TYPE

HINGED

TEMPERATURE

4°C - 10°C

WHITE WINE 8°C to 12°C

RED WINE 12°C to 18°C

DIMENSION

DEPTH	700
WIDTH	480
HEIGHT	810



WOODEN RACK WINE CHILLER

DOOR TYPE

HINGED

TEMPERATURE

4°C - 10°C

WHITE WINE 8°C to 12°C

RED WINE 12°C to 18°C

DIMENSION

DEPTH	700
WIDTH	480
HEIGHT	810

Kitchen Prep Refrigeration



Underbench Glass Door

Glass doors in under-bench units provide a sleek, efficient solution for kitchens looking to **optimize space without sacrificing functionality**. These units are designed to fit seamlessly under counters, offering clear visibility of contents through durable glass doors. This feature not only enhances the aesthetic appeal but also **improves operational efficiency** by allowing chefs and kitchen staff to quickly identify and access needed items. With a **variety of door configurations available**, glass door under-bench units can be tailored to meet the specific needs of any kitchen, making them a versatile choice for busy culinary environments.



COOLER

TEMPERATURE RANGE 0°C TO 10°C

DOORS	SHELVES	DIMENSIONS in mm
SINGLE	4	530(D) X 570(W) X 1692(H)
DOUBLE	4	
TRIPLE	4	

FREEZER

TEMPERATURE RANGE -18°C TO -22°C

DOORS	SHELVES	DIMENSIONS in mm
SINGLE	4	530(D) X 570(W) X 1692(H)
DOUBLE	4	
TRIPLE	4	

Chest Freezer



Solid Chest Freezer

Altitude **Solid Door Chest Freezers** come in various sizes and are perfect for those needing **robust, long-term storage solutions**. Available in **single, double, and triple door** configurations, they ensure optimal use of space and maintain consistent, low temperatures crucial for food preservation. These units are specially designed for both **commercial and residential** use, featuring a durable build and efficient performance. Offered mostly on a made-to-order basis, they can be tailored to meet specific space requirements and storage needs, providing a dependable freezing solution.



97 LITERS	148 LITERS	197 LITERS			
TEMPERATURE	DOOR	TEMPERATURE	DOOR	TEMPERATURE	DOOR
-18°C	SINGLE	-18°C	SINGLE	-18°C	SINGLE
DIMENSIONS in mm		DIMENSIONS in mm		DIMENSIONS in mm	
840 X 560 X 580		840 X 560 X 775		960 X 560 X 840	
247LITERS	272 LITERS	358 LITERS			
TEMPERATURE	DOOR	TEMPERATURE	DOOR	TEMPERATURE	DOOR
-18°C	SINGLE	-18°C	SINGLE	-18°C	SINGLE
DIMENSIONS in mm		DIMENSIONS in mm		DIMENSIONS in mm	
1160 X 560 X 840		1030 X 755 X 840		1270 X 755 X 840	
450 LITERS	550 LITERS	680LITERS			
TEMPERATURE	DOOR	TEMPERATURE	DOOR	TEMPERATURE	DOOR
-18°C	SINGLE	-18°C	SINGLE	-18°C	DOUBLE
DIMENSIONS in mm		DIMENSIONS in mm		DIMENSIONS in mm	
1530 X 755 X 840		1810 X 895 X 840		2000 X 740 X 850	
870 LITERS	970 LITERS				
TEMPERATURE	DOOR	TEMPERATURE	DOOR		
-18°C	DOUBLE	-18°C	DOUBLE		
DIMENSIONS in mm		DIMENSIONS in mm			
1930 X 895 X 910		2280 X 895 X 910			

Glass Top Chest Freezer

Altitude **Glass Top Chest Freezers** are available in a variety of sizes to suit different storage needs. Offering **single-door, double-door, and three-door** configurations, these freezers are designed for maximum convenience and visibility. Built to maintain consistent temperatures, they are ideal for preserving frozen goods in **both commercial and residential** environments. Most models are available on an **order basis**, ensuring a custom fit for any space. With a focus on efficiency and durability, our chest freezers are the perfect solution for reliable frozen storage.



273 LITERS

TEMPERATURE

-18°C

DOOR

SINGLE

DIMENSIONS in mm

1030 X 680 X 850

355 LITERS

TEMPERATURE

-18°C

DOOR

SINGLE

DIMENSIONS in mm

1270 X 680 X 850

445 LITERS

TEMPERATURE

-18°C

DOOR

SINGLE

DIMENSIONS in mm

1530 X 680 X 850

545 LITERS

TEMPERATURE

-18°C

DOOR

SINGLE

DIMENSIONS in mm

1810 X 680 X 850

Island Chest Freezer

Altitude Island Chest Freezers are designed to be the centerpiece of any retail setting, featuring **glass tops for easy viewing and access from all sides**. Available in various sizes, these freezers are perfect for displaying a wide range of frozen products such as ice cream, seafood, and pre-packaged meals. Their strategic placement in store layouts not only maximizes product visibility but also enhances shopping convenience for customers, making them essential for any busy supermarket or store.



650LITER

TEMPERATURE

-18°C

DOOR

ROUNDED

DIMENSIONS in mm

1907 X 954 X 1150

780 LITERS

TEMPERATURE

-18°C

DOOR

ROUNDED

DIMENSIONS in mm

2207 X 954 X 1150

900 LITERS

TEMPERATURE

-18°C

DOOR

ROUNDED

DIMENSIONS in mm

2607 X 954 X 1150

650LITER

TEMPERATURE

-18°C

DOOR

SQUARE

DIMENSIONS in mm

1860 X 854 X 835

780 LITERS

TEMPERATURE

-18°C

DOOR

SQUARE

DIMENSIONS in mm

2105 X 854 X 835

900 LITERS

TEMPERATURE

-18°C

DOOR

SQUARE

DIMENSIONS in mm

2505 X 854 X 835



Talk to us

info@altituderefrigeration.com.fj

+679 9989537

UNDER BENCH CHILLERS





DOUBLE DOOR UNDERBENCH CHILLER

DOOR TYPE DOORS

SLIDE DOUBLE

TEMPERATURE

1°C to 4°C

DIMENSION

DEPTH 1300
WIDTH 650
HEIGHT 900



DOUBLE GLASSDOOR UNDERBENCH CHILLER

DOOR TYPE DOORS

HINGED DOUBLE

TEMPERATURE

1°C to 4°C

DIMENSION

DEPTH 900
WIDTH 520
HEIGHT 900



TRIPLE DOOR UNDERBENCH CHILLER

DOOR TYPE DOORS

HINGED THREE

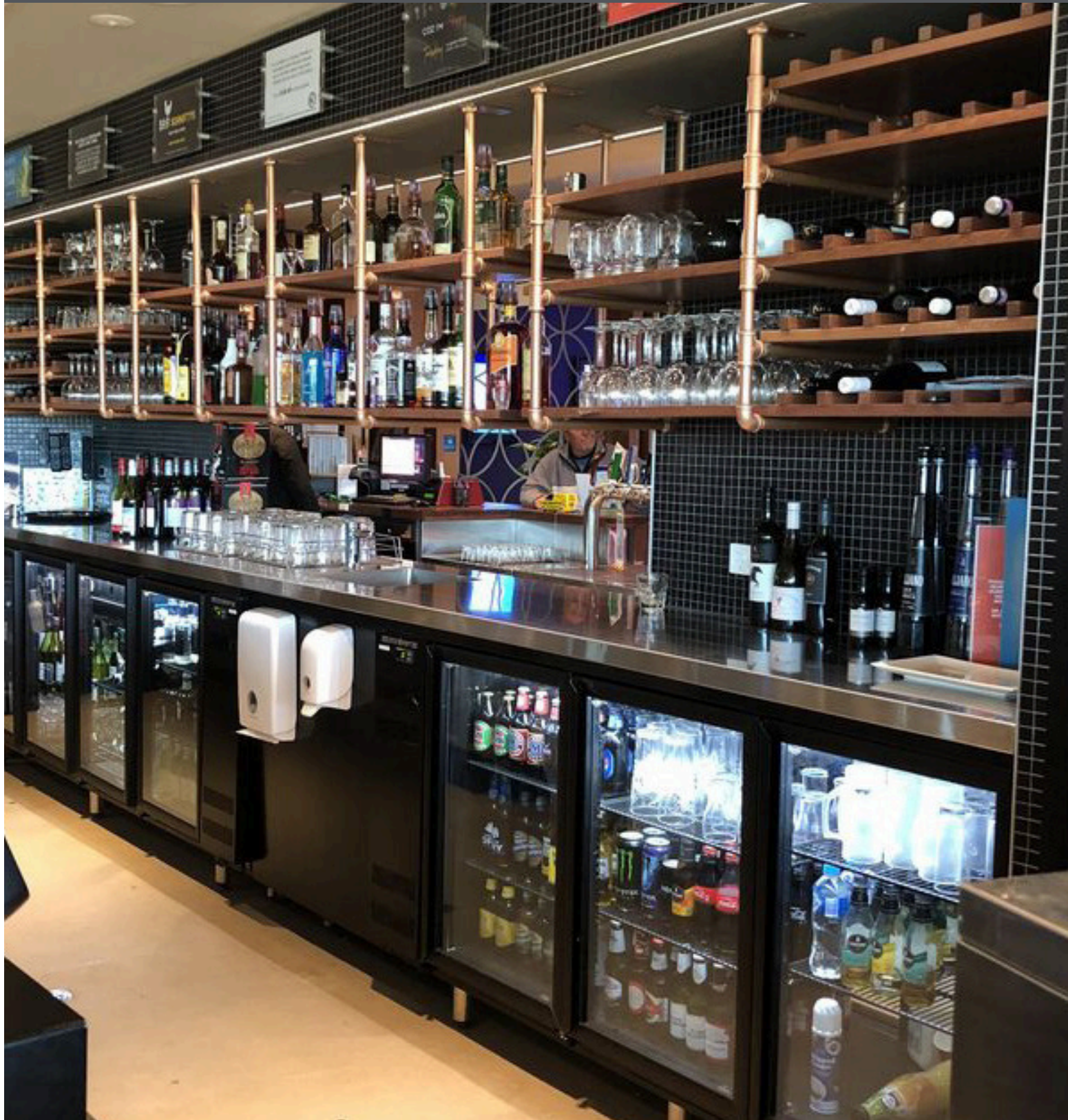
TEMPERATURE

1°C to 4°C

DIMENSION

DEPTH 1350
WIDTH 520
HEIGHT 900

BACK BAR FRIDGE



CAR COOLER



CAR COOLER

CUBIC FT

1.3

TEMPERATURE

-4°F to -68°F

DIMENSION

DEPTH	300
WIDTH	600
HEIGHT	500



CAR COOLER

CUBIC FT

1.4

TEMPERATURE

-4F (-20C)

DIMENSION

DEPTH	400
WIDTH	600
HEIGHT	400