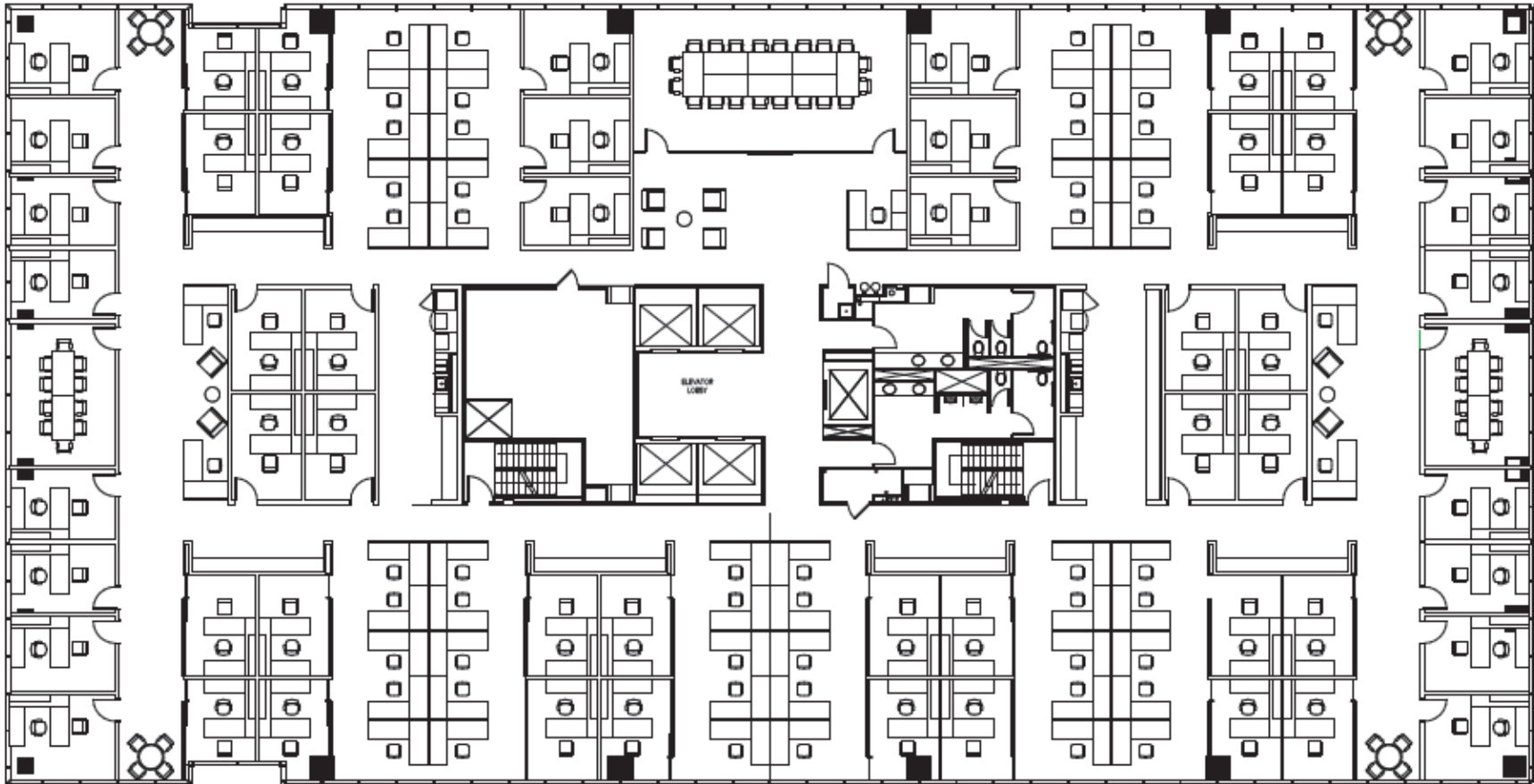


50/50 OFFICE & WORKSTATIONS LAYOUT



WORKSTATIONS	54
OFFICES	54
TOTAL	108
USABLE AREA	20,070 S.F.
EFFICIENCY	186 S.F./PERSON



22,898 RSF

FOR LEASING INFORMATION

Doug Little 713.272.1284 / Doug.Little@transwestern.com **Kelli Gault** 713.410.1220 / Kelli.Gault@transwestern.com
David Baker 713.407.8701 / David.Baker@transwestern.com **Jack Scharnberg** 713.407.8717 / Jack.Scharnberg@transwestern.com