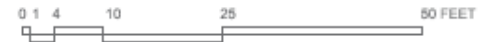
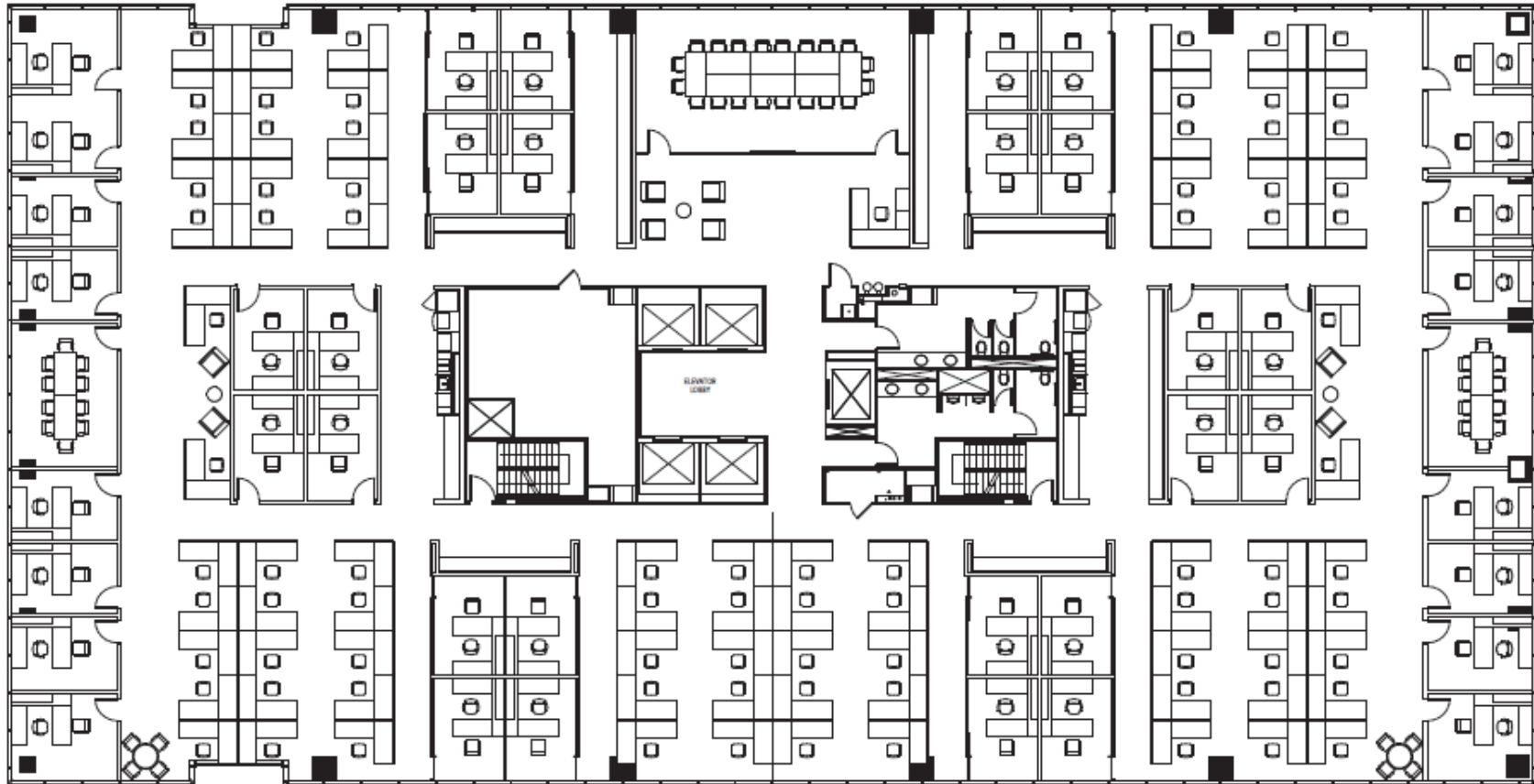


TRADITIONAL LAYOUT



WORKSTATIONS	92
OFFICES	40
TOTAL	132
USABLE AREA	20,070 S.F.
EFFICIENCY	152 S.F./PERSON

22,898 RSF

FOR LEASING INFORMATION

Doug Little 713.272.1284 / Doug.Little@transwestern.com **Kelli Gault** 713.410.1220 / Kelli.Gault@transwestern.com
David Baker 713.407.8701 / David.Baker@transwestern.com **Jack Scharnberg** 713.407.8717 / Jack.Scharnberg@transwestern.com

