

CANDLESTICKS & CHART PATTERNS

MASTER RESOURCE

Large-text study stack for website viewing and student review.

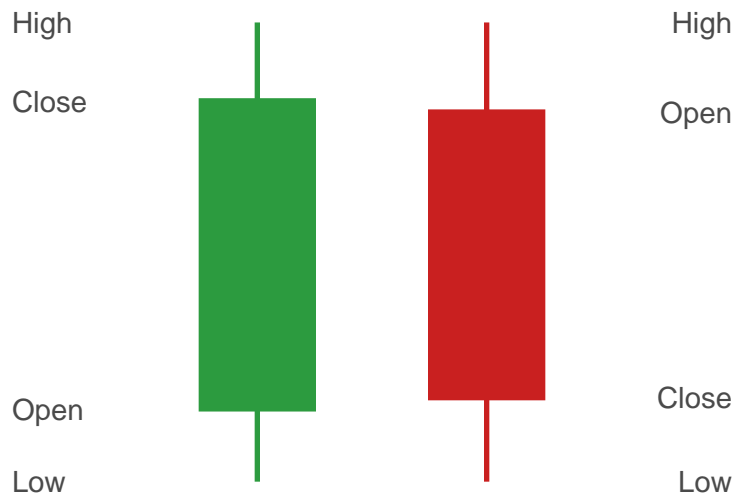
Includes candle structure, wick logic, reversal signals,
bullish and bearish chart patterns, channels, triangles, and wedges.

Use the dark version online and the white version for printing.

CANDLESTICK BASICS

Body, wicks, and rejection logic

How to Read a Candle



Bullish Candle **Bearish Candle**

Close > Open

Close < Open

Wick Logic

Long Lower Wick

buyers rejected lows

Long Upper Wick

sellers rejected highs

Long Wicks Both Sides

neutral / doji

BULLISH CANDLESTICK SIGNALS

Standard bullish reversal/confirmation examples

Dragonfly Doji



Bullish

Bullish Harami



Bullish

Three Inside Up



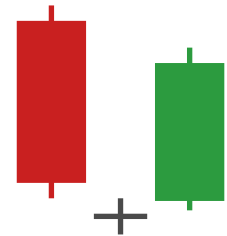
Bullish

Three Outside Up



Bullish

Morning Star



Bullish

Bullish signal logic:

- Look for these after downside pressure or near support/demand.
- Long lower wick = rejection of lower prices.
- Morning Star = bullish reversal: red candle, small star/doji lower, green candle closes back into red body.
- A pattern still needs confirmation: level, trend context, volume, and risk/reward.

BEARISH CANDLESTICK SIGNALS

Standard bearish reversal/confirmation examples

Gravestone Doji



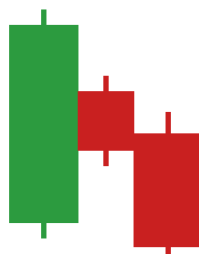
Bearish

Bearish Harami



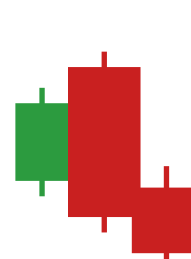
Bearish

Three Inside Down



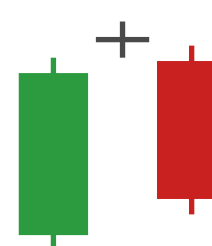
Bearish

Three Outside Down



Bearish

Evening Star



Bearish

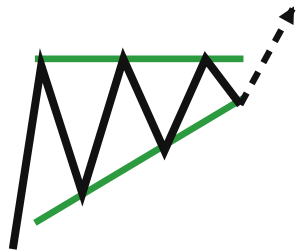
Bearish signal logic:

- Look for these after upside pressure or near resistance/supply.
- Long upper wick = rejection of higher prices.
- Evening Star = bearish reversal: green candle, small star/doji higher, red candle closes back into green body.
- A pattern still needs confirmation: level, trend context, volume, and risk/reward.

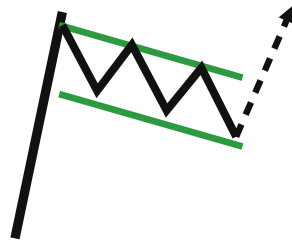
BULLISH CHART PATTERNS

Zigzag price action inside the structure, then bullish breakout

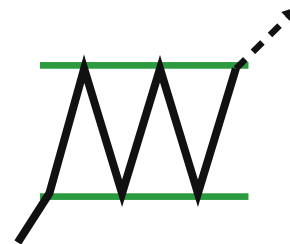
Ascending Triangle



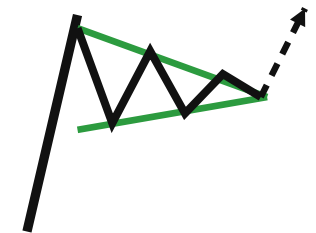
Bullish Flag



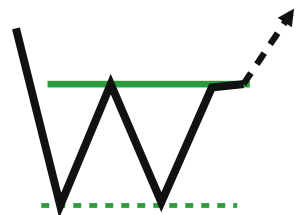
Bullish Rectangle



Bullish Pennant



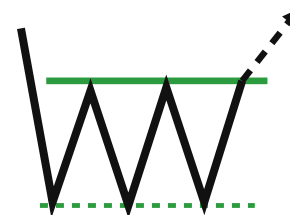
Double Bottom



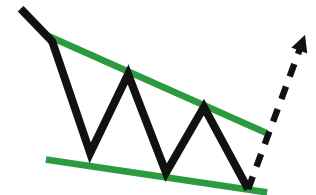
Inverted Head & Shoulders



Triple Bottom



Falling Wedge



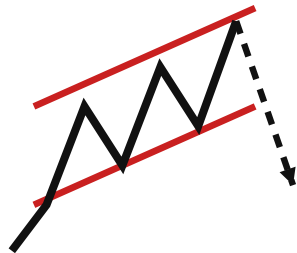
CHANNELS, TRIANGLES & WEDGES

Additional structures from the reference sheet, drawn with internal swings

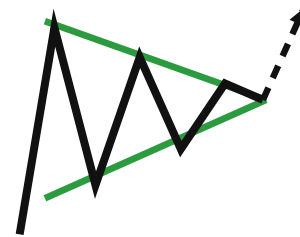
Descending Channel



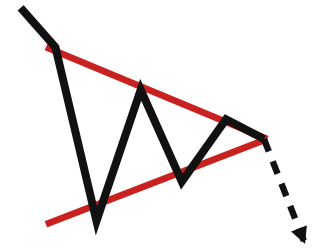
Ascending Channel



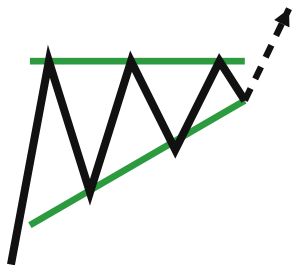
Symmetrical Triangle - Bullish



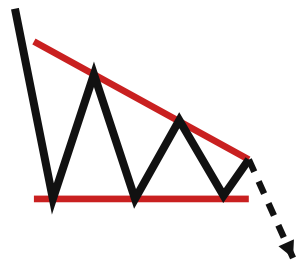
Symmetrical Triangle - Bearish



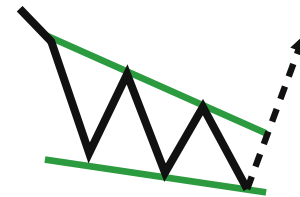
Bullish Triangle



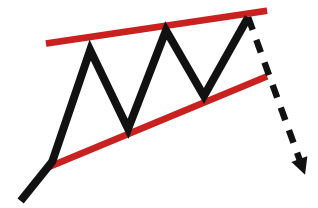
Bearish Triangle



Bullish Wedge / Falling Wedge



Bearish Wedge / Rising Wedge



CONFIRMATION CHECKLIST

Do not trade a shape by itself

- 1. Structure** Is price at support, resistance, supply, demand, VWAP, or a major prior high/low?
- 2. Trend** Is the pattern aligned with the bigger timeframe, or is it a confirmed reversal setup?
- 3. Breakout** Did price actually break the trendline/neckline/range with a clean candle close?
- 4. Retest** Did the market retest the broken level and hold/reject cleanly?
- 5. Volume / Momentum** Is the move supported by volume, momentum, or strong candle expansion?
- 6. Risk** Where is the invalidation point, and is the reward worth the risk?