

产品概述 Product Brief

本系列熔断体适用于交流 50Hz，额定电压至 1140V，额定电流至 1250A，主要用于电气装置中作线路过载和短路保护 (gG/gL)，能可靠地分断最小熔化电流至 120KA 之间的任何电流。亦可派生为半导体器件及其成套装置的短路保护 (aR) 以及电动机短路保护 (aM)。

The series of fuse links are mainly used in AC 50Hz, rated voltage up to 1140V, rated current up to 1250A and for protecting electric equipment from overload short-circuit. It can reliably break the min. Fusion current to any current within 120 KA.

It is also available for the protection of semiconductor parts and equipments against short-circuit (type aR) and protection of motors (type aM).

结构特点 Design Features

熔体采用高纯度优质纯铜 / 银材料，灭弧介质是优异的高纯度石英砂，熔管为高强度陶瓷。先进的制造工艺保证了本产品具有功耗小、特性稳定的特点，其外形结构及安装尺寸同国内外同类先进产品一致，符合 IEC60269、VDE0636、GB13539 标准要求。

It adopts pure copper/silver material of high purity and high quality. The arc-extinguishing medium is high purity quartz sand and fuse tube is high strength ceramic. The advanced manufacturing craftwork ensures the performance of small power waste, stable characteristic for the product. The outline structure and installation dimension accords the advanced similar products from domestic and abroad. It conforms to IEC60269, VDE0636 and GB13539.

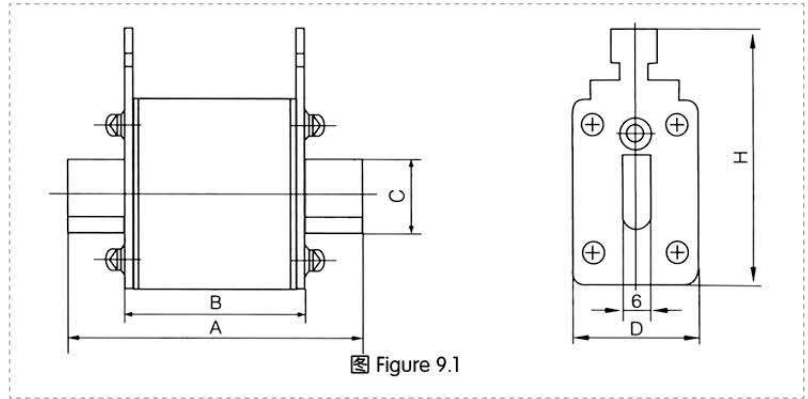
基本数据 Basic Data

熔体型号、外形尺寸、额定电压、额定电流见图 9.1~ 图 9.10 及表 9。

Then model, outline dimension, rated voltage and rated current are shown in Figures 9.1-9.10 and Table 9.

低压高分断能力熔断体 Low Voltage H.R.C Fuse Links

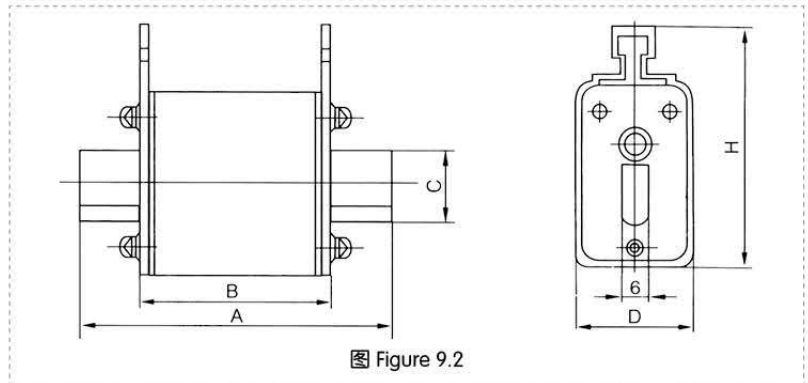
外形及安装尺寸 Outline and installation size



技术参数 Technical Data

序号 No.	熔断体型号 Models				额定电压 (V) Rated voltage	额定电流 (A) Rated current	图号 Fig	外形尺寸 (mm) Outline dimension(mm)					重量 (g) Weight
	本公司 JINSHAN		国内外同类产品 Cross-reference					A	B	C	D	H	
	普通 (gG) Normal	快速 (aR) Fast	普通 (gG) Normal	快速 (aR) Fast									
D0104	RT16-000	-	NT00C NH00C	-	500/690	4~100	9.1	78.5	49	15	21	52.5	150
D0105	RO30A	RS30A	NH00C	-	500/690	4~100	9.1	78	49	15	21	48	123
D0106	RO30B	RS30B	NH00C	-	500/690	4~100	9.1	78	49	15	21	48	117
D0107	RO30C	RS30C	NH00C 3NA3	-	500/690	10~100	9.1	78	49	15	21	52.5	132

外形及安装尺寸 Outline and installation size



技术参数 Technical Data

序号 No.	熔断体型号 Models				额定电压 (V) Rated voltage	额定电流 (A) Rated current	图号 Fig	外形尺寸 (mm) Outline dimension(mm)					重量 (g) Weight
	本公司 JINSHAN		国内外同类产品 Cross-reference					A	B	C	D	H	
	普通 (gG) Normal	快速 (aR) Fast	普通 (gG) Normal	快速 (aR) Fast									
D0108	RT16-00	-	NT00 NH00	-	500/690	4~160	9.2	78	49	15	29	56.5	150
D0109	RO31	RS31	RT20-00 3NA	HLS00	500/690	4~160	9.2	78	49	15	28	59	176.5
D0110	RO31A	RS31A	NH00 PH00	-	500	10~160	9.2	78	49	15	30	53	178.5
D0111	RT16-0	-	NT0 NH0	-	500/690	4~100	9.2	125	65	15	29	56.5	200
D0112	RO31B	RS31B	RT20-0	3NE	500/1140	6~100	9.2	125	68	15	29	61.5	278

低压高分断能力熔断体 Low Voltage H.R.C Fuse Links

外形及安装尺寸 Outline and installation size

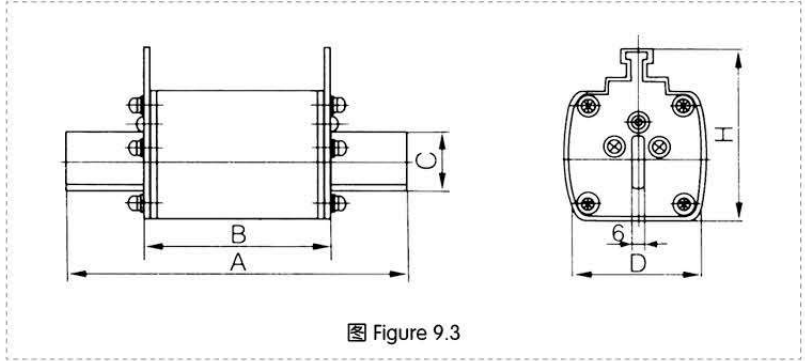


图 Figure 9.3

技术参数 Technical Data

序号 No.	熔断体型号 Models				额定电压 (V) Rated voltage	额定电流 (A) Rated current	图号 Fig	外形尺寸 (mm) Outline dimension(mm)					重量 (g) Weight
	本公司 JINSHAN		国内外同类产品 Cross-reference					A	B	C	D	H	
	普通 (gG) Normal	快速 (aR) Fast	普通 (gG) Normal	快速 (aR) Fast									
D0113	RT16-1	-	NT1 NH1	-	500/690	32~250	9.3	135	68	21	48	62	360
D0114	RT16-2	-	NT2 NH2	-	500/690	80~400	9.3	150	68	27	58	72	650
D0115	RT16-3	-	NT3 NH3	-	500/690	160~630	9.3	150	68	33	67	84.5	850
D0116	RO31C	RS31C	3NA3 NH1	-	500	32~200	9.3	135	68	20	29	61.5	293.5
D0117	RO32	RS32	NT1 NH1 3NA1	-	500/690	36~250	9.3	135	68	20	48	60	455
D0118	RO32A	RS32A	-	-	1140	200	9.3	172	110	19.5	44	58	570

外形及安装尺寸 Outline and installation size

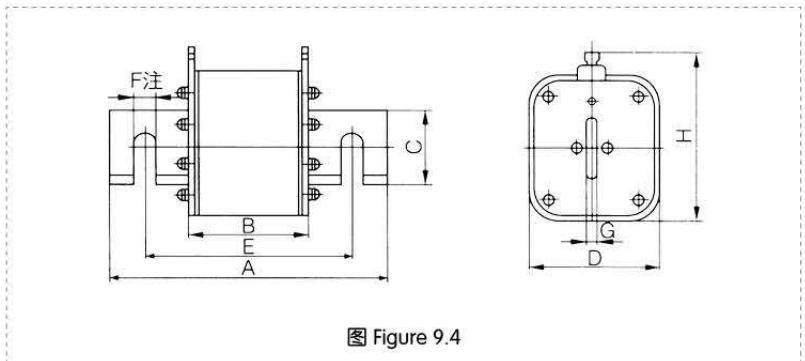
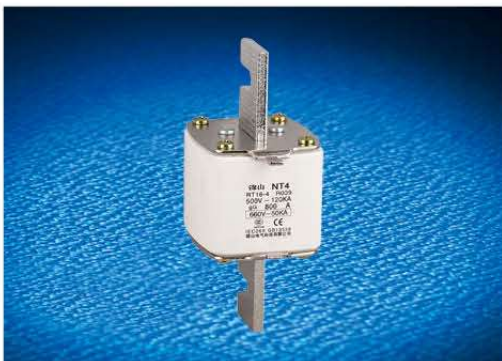


图 Figure 9.4

技术参数 Technical Data

序号 No.	熔断体型号 Models				额定电压 (V) Rated voltage	额定电流 (A) Rated current	图号 Fig	外形尺寸 (mm) Outline dimension(mm)								重量 (g) Weight
	本公司 JINSHAN		国内外同类产品 Cross-reference					A	B	C	D	E	F	G	H	
	普通 (gG) Normal	快速 (aR) Fast	普通 (gG) Normal	快速 (aR) Fast												
D0119	RT16-4	-	NT4 NH4	-	400	500~1000	9.4	200	78.5	50	87	-	-	8	113	2140
D0120	RO34K	RS34K	-	3NCB	500/660	150~630	9.4	140	68	32	70	108	10.5	6	85	810
D0121	RO38	RS38	-	3NE3626	500	200~630	9.4	160	86	32	70	126	11	6	81.5	1050
D0122	RO39	RS39	NT4 RT17	-	500	500~1250	9.4	200	90	50	97	150	16.3	6	113	2470

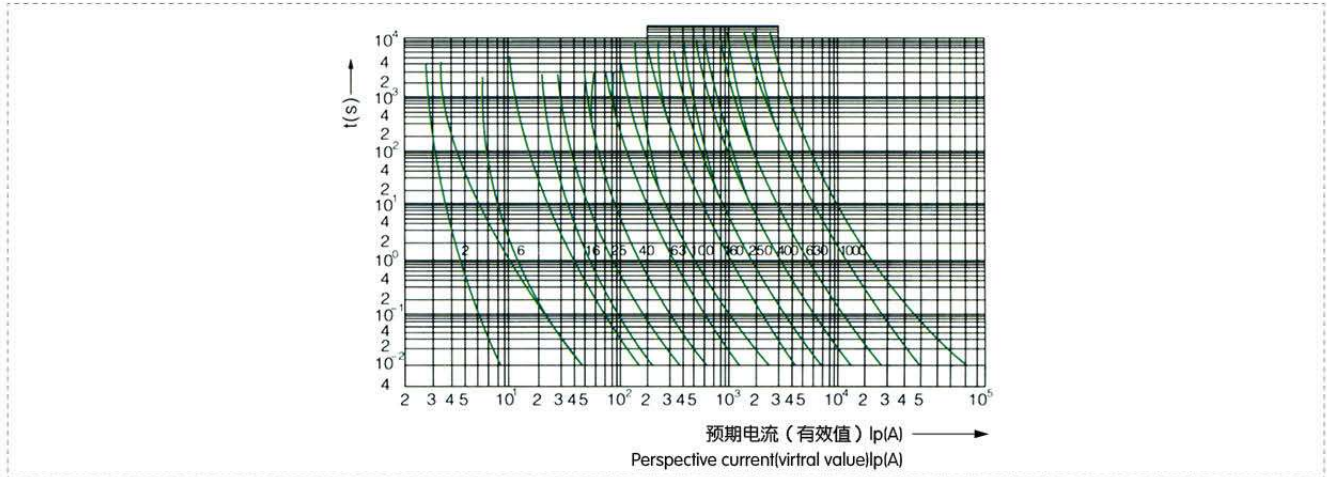
注: 如用户需要, 触刀固定孔, 可改成一横一直或二直结构型式。

Note: If user requires, contact knife fixing hole can be changed to one hang none straight type or two straight structure.

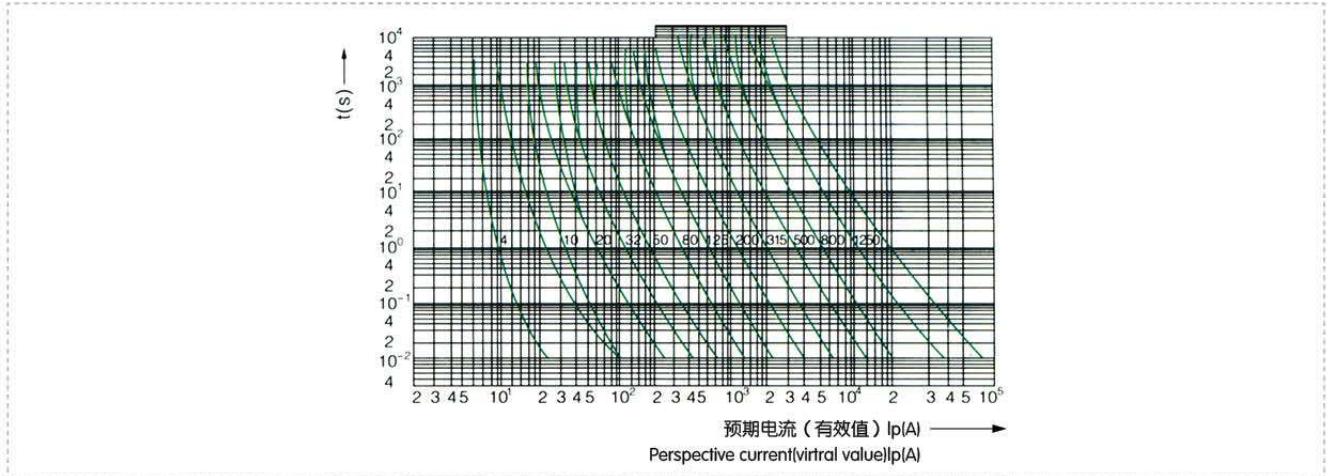


特性曲线 Characteristics Curve

"gG" 熔断体的时间 - 电流带 Time-current range of "gG" fuse links



"gG" 熔断体的时间 - 电流带 Time-current range of "gG" fuse links



"gG" 熔断体的截断电流特性曲线 Breaking current characteristics curve of "gG" fuse links

